

Front and back cover and pocket flap (not capacity)



GRAVITY  
AND MAGNETIC  
SERVICES

wherever in the world  
you are exploring,  
start with GETECH



GRAVITY  
AND MAGNETIC  
SERVICES

GETECH  
University of Leeds  
Leeds LS2 9JT  
United Kingdom  
Tel +44 (0)113 343 5240  
Fax +44 (0)113 242 9234  
E-mail info@getech.com

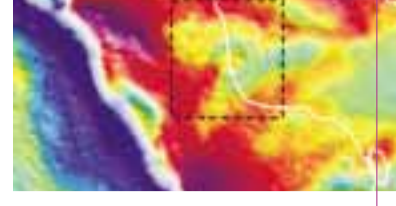
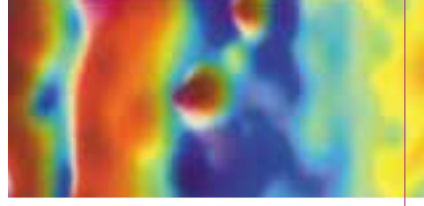
GETECH Inc  
12503 Exchange Drive Suite 510  
Stafford  
Texas 77477

United States of America  
Tel +1 281 240 0004  
Fax +1 281 240 6262  
E-mail info@getech.com

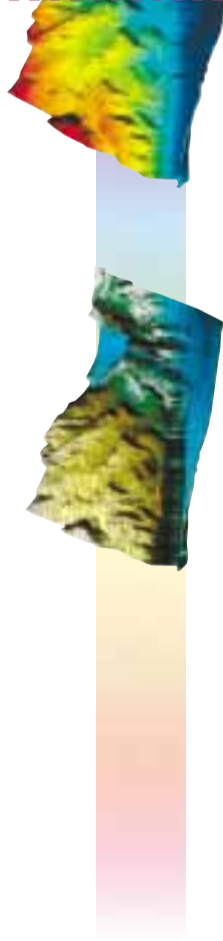
[www.getech.com](http://www.getech.com)

True Design, Leeds, England © 2003

Words and created images © Geophysical Exploration Technology Limited 2003



# IFC and IBC and inner flap



Derek Fairhead  
Managing Director

Founded in 1986, GETECH is a leading company providing gravity and magnetic data and related management and interpretation services to the international oil and mining exploration industry.

By using gravity and magnetic data, and involving GETECH early in exploration programmes, companies have discovered they can be more cost effective and focused in their decision making.

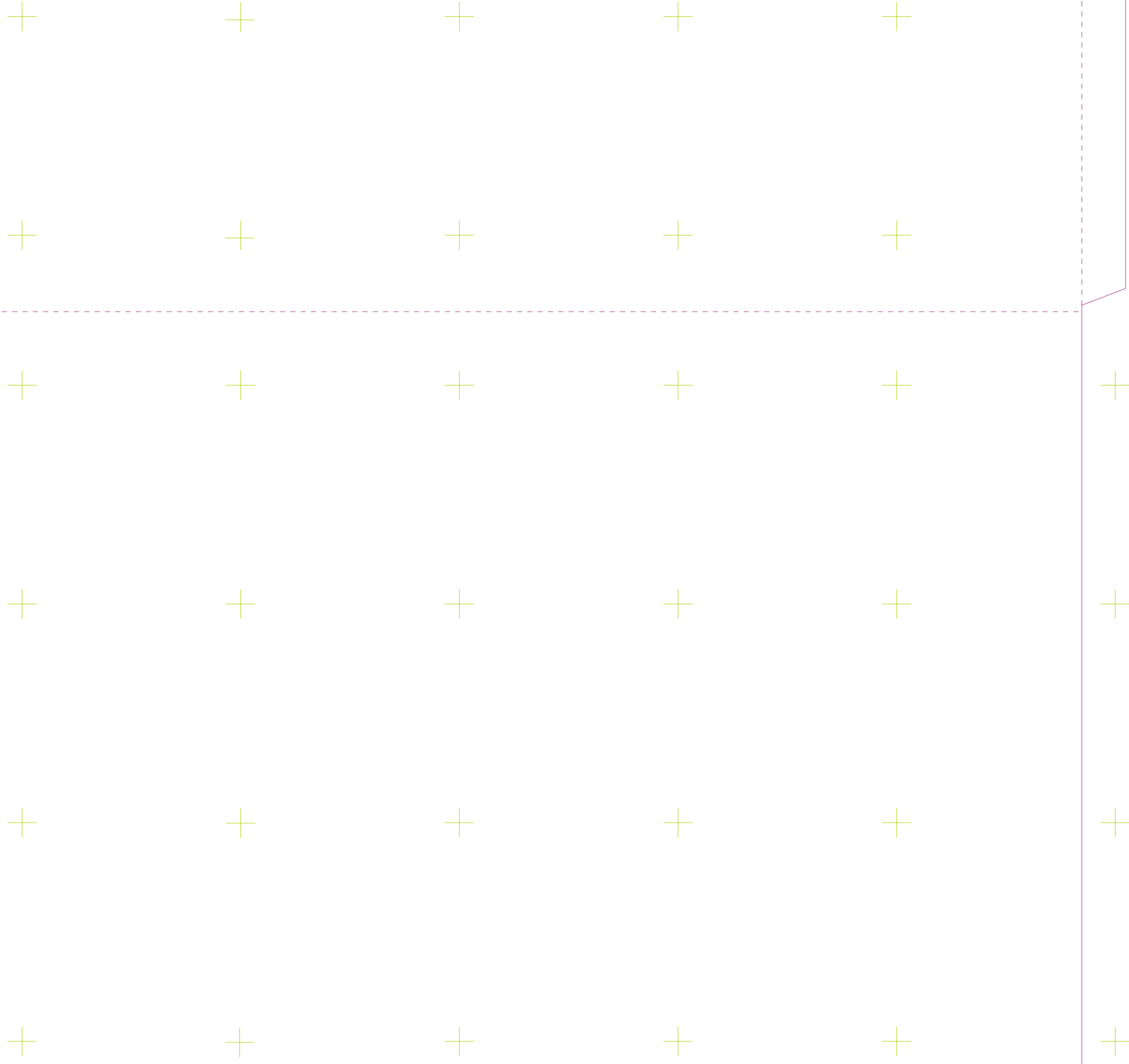
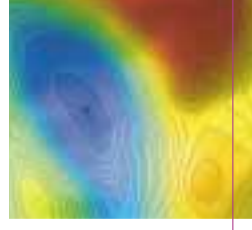
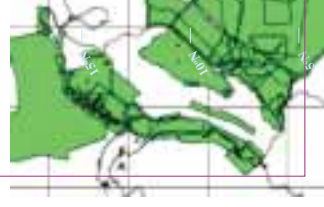
Whether you are developing your strategy, scoping new ventures, exploring opportunities or supporting a seismic interpretation, GETECH offers reliable solutions that will help you to:

- target exploration efforts more accurately
- highlight additional exploration opportunities
- save significant money acquiring seismic data
- reduce exploration risk
- gain competitive advantage over other companies

We believe in providing an individual service to our clients. This is reflected in our high calibre geophysicists and geologists, who work closely with clients and partners to maximise the value of gravity and magnetic data.

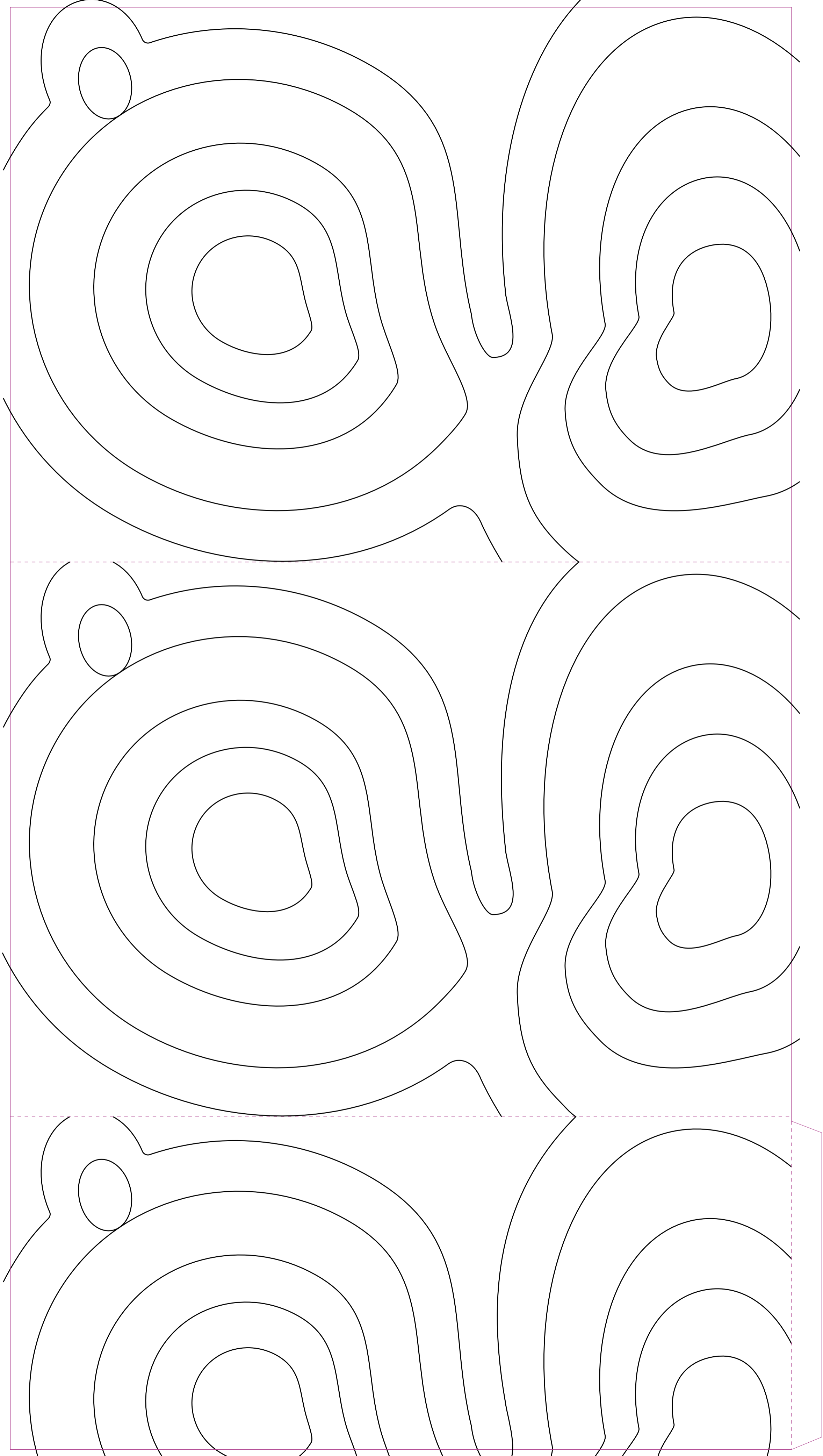
The success of this partnership resulted in the opening of a GETECH technical office in Houston in 1996, to serve the North American domestic and international oil industry.

Wherever in the world you are exploring, let us show you how you will benefit from our data, services and solutions.

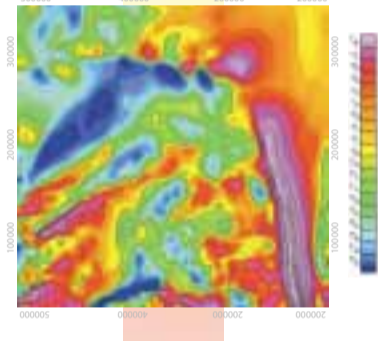


BLIND EMBOSING

FRONT COVER



# IFC goes here



how GETECH gravity and magnetic data can assist your exploration programme

#### A global perspective

- Worldwide coverage
- Review large areas before declaring an interest
- 'Data room' evaluation
- Testing ideas and models with real data

#### Seeing the regional picture

- Tectonic analysis
- Sediment thickness
- Basement structure
- Crustal boundaries
- Basement terranes
- Heat flow studies
- Moho depth determinations

#### Focused explorations

- High-grading areas for seismic data purchase/acquisition
- Support for seismic processing
- Overcoming seismic interpretation ambiguities
- Identifying paleochannels, canyons and depocentres
- Seismic fault correlation
- Salt modelling
- Prioritising prospects and leads



## GETECH services

#### Exploration information

- Extensive links with international organisations
- Global gravity and magnetic data brokerage
- Data management
- Data acquisition
- Geodesy
- Survey planning and QC
- Bathymetry
- Digital elevation models

#### Technical processing

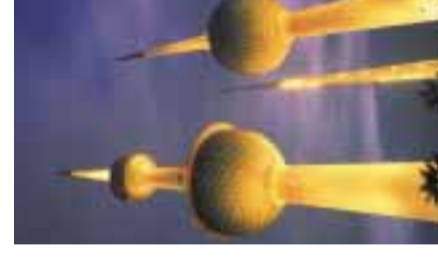
- Data preparation, scanning, digitising and integration
- Marine processing
- Unique satellite gravity solutions
- Advanced filtering and transformations
- Profile and grid-based interpretation
- 2D and 3D modelling
- Depth estimation and lineament mapping

#### Geological analysis

- Basin architecture
- Depth to basement studies
- GIS services
- Prospect delineation
- Proprietary interpretation
- Non-exclusive exploration reports
- Site investigation and environmental studies

#### Exploration intelligence

- Remote sensing
- Training courses
- Software
- R&D implementation of new techniques

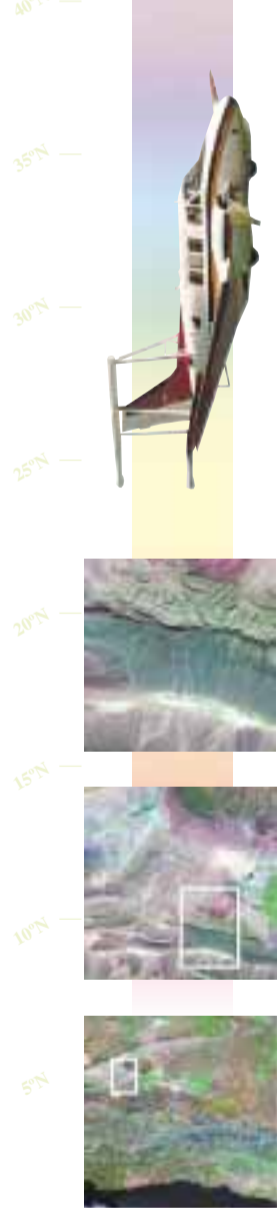
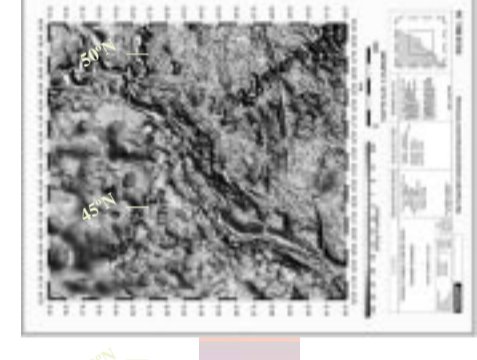
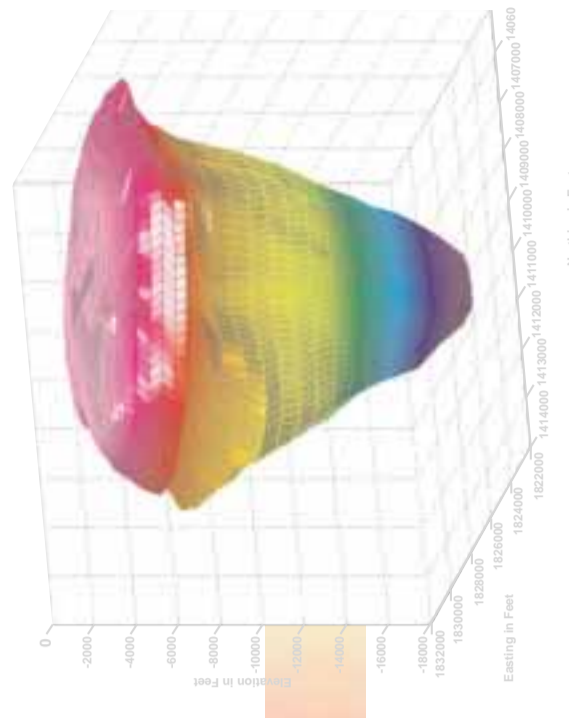


Algeria  
Middle East  
South America  
South East Asia  
Central-South Urban  
North America



Simon Lewis, Meteo Services, University of Leeds





## data holdings and brokerage

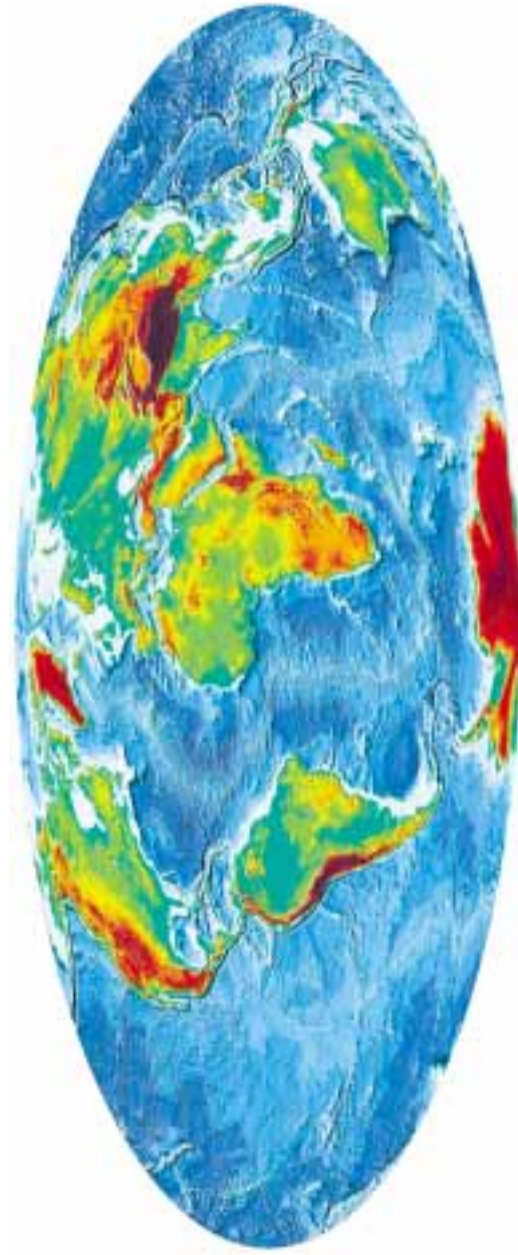
Early in any exploration process, there is the need to search for existing knowledge and data. Gravity and magnetic surveys are fundamental datasets and GETECH can supply both. We hold gravity and magnetic data for almost every country in the world. These data complement and enhance the value of all other geophysical and geological datasets.

Our gravity and magnetic data cover all the frontier exploration areas and can be used at all scales, from cratonic tectonic analysis, down to identifying targets. The quality, coverage and resolution of the data are continually improving through our extensive global network of commercial, academic and government contacts.

**When looking at frontier or other exploration acreage, your first call should be to GETECH.**



## GETECH holds the worlds most extensive library of commercial gravity and magnetic data



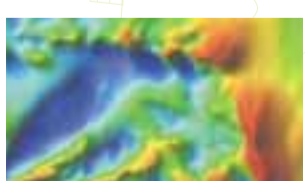
**South America** - we continue to acquire new gravity data in conjunction with numerous organisations in five countries. Our unique Brazilian datasets are assisting the search for natural resources in the offshore sedimentary basins and the margins of the onshore cratons.

**Asiatic region** - we have exclusive links forged in the early 1990s, with partner organisations in Russia, China, Mongolia and Indonesia. Access to new datasets continues to grow, and the data are proving to be an invaluable tool in locating and developing the oil and mineral potential of the region.

**Africa and the Middle East** - Africa is where GETECH started. The tectonic stresses that have fractured the region during the past 200Ma can be clearly traced and analysed using gravity and magnetic data.

**North America** - our Houston office holds over 750,000 gravity stations, covering southern parts of Louisiana, Mississippi, Florida, Texas and Alabama that have been used to model over 350 individual salt structures. New satellite gravity data over the Gulf of Mexico offer new structural models of the micro-plate development of the region.

**Europe** - we were instrumental in gaining the first commercial releases of Eastern European and Russian gravity and magnetic data. These datasets are helping to open up the new petroleum frontiers of the Mediterranean region and Eastern Europe.



## exploration studies

Gravity and magnetic data are crucial to the success of any exploration programme. Using GETECH'S specialist interpretation experience, companies can gain new insights into:

- the tectonic evolution of a region
- precise locations of salt diapirs and walls
- basement configuration and structural setting
- prospectivity of known basins

GETECH's ArcView™ GIS studies, use gravity and magnetic data, supplemented by information from well logs, seismic data and regional experts, to:

- identify prospects and plays
- assist farm-in evaluations
- extrapolate geological relationships into new areas
- high-grade areas for seismic data purchase
- archive and develop the corporate knowledge of a company



## non-exclusive studies

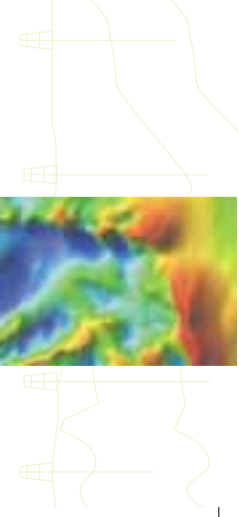
Oil and mining companies can by-pass the often time-consuming data gathering and preparation phase of a project, and gain new exploration concepts and ideas, by licensing our non-exclusive studies or commissioning proprietary work.

GETECH's non-exclusive studies include:  
**passive margin studies of the North and South Atlantic and South East Asia.** These use attributes of our re-processed satellite gravity data and geological experts to help define, for example, crustal types, sedimentary channels, canyons and depocentres.

**two major tectonic and basin evolution studies of the Arabian Plate and Libya,** which describe the tectonic framework and basin architecture that have influenced sedimentation and hydrocarbon entrapment.

**a new tectonic map of Brazil.** This has assisted mining companies examine the pre- and post-plate tectonic break-up environments and screen the major cratonic regions for new prospects.

**an examination of the exploration elements of hydrothermal dolomite** in the Trenton-Black River Trend in the western Appalachian basins.





GETECH

## technical processing and data analysis

With no conflict of interest as a marine acquisition contractor, GETECH processes marine gravity and magnetic data, collected on board seismic vessels, as an **independent contractor**.

We offer a comprehensive range of value-added processing services that assist in the interpretation of gravity and magnetic data, including:

grid and line based data enhancements for visualisation and analysis

filtering and FFT transformations

2D and 3D forward modelling

2D and 3D inversion (e.g. for basement morphology)

'Extended Euler' deconvolution (2D and 3D)

spectral analysis for depth determinations

structural lineament analysis and characterisation

3D gravity modelling around salt structures

### satellite gravity data

GETECH's commitment to R&D over the past ten years, has yielded technology to provide the most accurate and consistent satellite gravity data available. On behalf of an oil industry consortium study we are reprocessing altimetry data from the GEOSAT and ERS-1 satellites to produce a global continental margins dataset.

### industry training courses

Our in-house and public training courses, in the benefits of using gravity and magnetic data for exploration programmes, give industry professionals the confidence to make important exploration decisions.

### data management

GETECH's GIS archiving technology enables companies to keep their valuable corporate gravity and magnetic data safe, secure and accessible. Our data management services include, scanning, data loading, verification and visualisation.

Your global exploration starts with GETECH. We have the gravity and magnetic data, and interpretation expertise to help you make both important and cost-effective exploration decisions.

Call us to discuss your needs.



# IBC goes here

